

## Conway Middle School

1104 Elm Street  
Conway, SC 29526



# South Carolina State Report Card

State and federal laws require public schools to release report cards to the public each year. This year, the report card has been updated to reflect changes in reporting directed by the SC Education Oversight Committee. Schools will not be rated for state accountability purposes until Fall 2017 when the state will transition to a single accountability system. The following reports student performance in school year 2014-15.

<b>Grades:</b>	6-8 Middle	<b>Principal:</b>	Marjorie C. McIver
<b>Enrollment:</b>	515 students	<b>Superintendent:</b>	Dr. Rick Maxey
<b>School Phone:</b>	843-488-6040	<b>Board Chair:</b>	Joe DeFeo
<b>School Website:</b>	<a href="http://cm.horrycountyschools.net/">http://cm.horrycountyschools.net/</a>		



### Profile of the SC Graduate

#### World Class Knowledge

- Rigorous standards in language arts and math for career and college readiness
- Multiple languages, science, technology, engineering, mathematics (STEM), arts and social sciences\*

#### World Class Skills

- Creativity and innovation
- Critical thinking and problem solving
- Collaboration and teamwork
- Communication, information, media and technology
- Knowing how to learn

#### Life and Career Characteristics

- Integrity
- Self-direction
- Global perspective
- Perseverance
- Work ethic
- Interpersonal skills

\* 21st Century core courses in Social Sciences include History, Geography, Economics, Government and Civics.

### WORLD CLASS SKILLS & LIFE AND CAREER CHARACTERISTICS

*Our school is helping all students develop the world class skills and life and career characteristics of the Profile of the Graduate by ...*

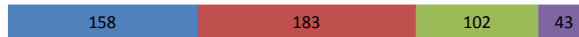
Conway Middle School is helping all students develop the world class skills and life and career characteristics of the profile of the South Carolina Graduate by providing a safe, nurturing, and academically challenging learning environment. Our school wide motto, Respect, Restraint, Responsibility, and Relationships, promotes life skills which will benefit students throughout their lives. We utilize our motto through our daily interactions with students, parents, community, and colleagues. Conway Middle School students are challenged daily in their four core classes, English Language Arts, Mathematics, Science, and Social Studies, which are based on rigorous standards promoting world class knowledge. As part of the Personalized Digital Learning initiative in Horry County Schools, all students and teachers are issued an iPad to promote individualized learning catering to individual strengths and weaknesses. We challenge our teachers and students to continue to utilize best practices inside and outside of the classroom to reach their full potential through utilizing Blended Learning, Kagan Structures, iTunesU, Discovery Ed, ALEKS Math, Achieve3000, Kahoot, Edmodo, Google Docs, USA Test Prep, No Red Ink, Science Kits, ACT/SAT Prep, Read180, Voyager Math, along with other programs. Conway Middle School offers various programs in the Fine Arts Department to allow our students to build skills which will be utilized throughout their lives. These programs include: band, orchestra, chorus, computer application, and visual art. Our students have excelled in these programs at district and state levels by being selected to participate in Regional Band, Regional Chorus, and other fine arts programs. Other offerings at Conway Middle allow students to excel in various areas. Over twenty students were involved in Horry County School's Robotics and Technology Fair, and over 90 students participate in Conway Middle or Conway High School athletic programs. Conway Middle School students have been selected to represent our school at the state and national level in the Scribbs Spelling Bee and National History Day. Our students and staff further develop life and career characteristics by participating in service learning activities such as collecting food items for the needy, visiting local nursing home patients, and making donations to charities such as the March of Dimes and the American Cancer Society. Conway Middle School students also support local families in need with food, clothing, and/or monetary assistance throughout the year. Our staff, PTO, School Improvement Council, Business Partners, Community, and administration remain focused on Conway Middle School's mission. The mission of Conway Middle School is to ensure that each student develops as a responsible person through a challenging curriculum, parental involvement, and community support within a nurturing safe environment that fosters lifelong learning. Jonathan Lee James, Principal Angela Rabon, School Improvement Council Chairperson

**KNOWLEDGE**

The ACT Aspire assessment was given to students in grades 3-8 in Spring 2015. Students were assessed in the subject areas of Reading, English, Mathematics and Writing

**ENGLISH**

Conway Middle School  
70.2%



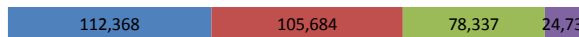
Horry County Schools  
69.5%



Middle Schools with Students Like Ours  
67.8%



Statewide  
67.9%



School: Grade 6  
65.8%



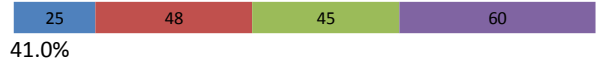
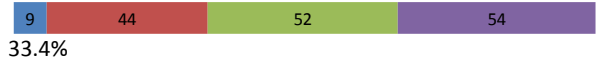
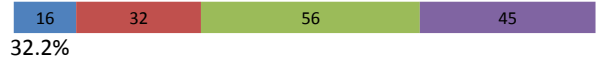
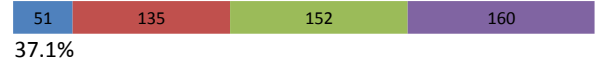
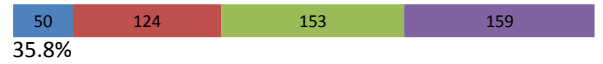
School: Grade 7  
78.6%



School: Grade 8  
66.3%



**READING**



**MATHEMATICS**

Conway Middle School  
40.3%



Horry County Schools  
53.6%



Middle Schools with Students Like Ours  
36.6%



Statewide  
46.7%



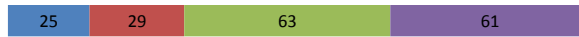
School: Grade 6  
57.4%



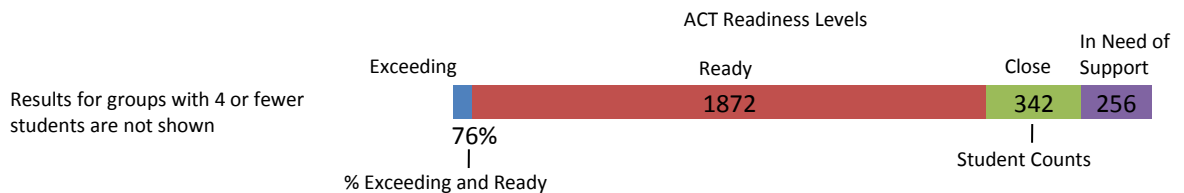
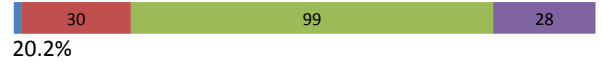
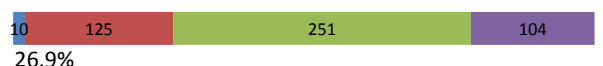
School: Grade 7  
35.2%



School: Grade 8  
30.3%



**WRITING**



Abbreviations for Missing Data

N/A-Not Applicable

N/AV-Not Available

N/C-Not Collected

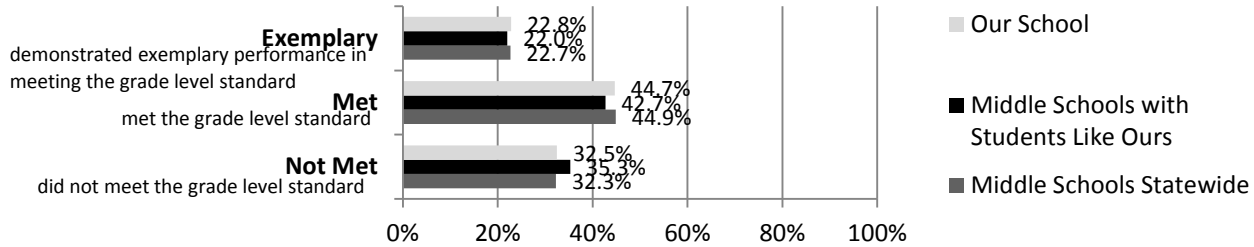
N/R-Not Reported

I/S-Insufficient Sample

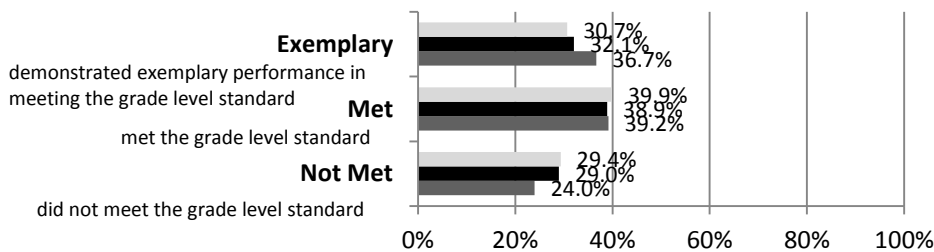
**KNOWLEDGE**

The SC Palmetto Assessment of State Standards (SCPASS) was given to students in grades 4 - 8 in Spring 2015. Students were assessed in the subject areas of Science and Social Studies.

**Science**



**Social Studies**



**Science SCPASS**

Our School: Percent Met and Above for each grade level		
6th grade	7th grade	8th grade
63.8	69.2	69.1

**Social Studies SCPASS**

Our School: Percent Met and Above for each grade level		
6th grade	7th grade	8th grade
76.5	64.8	70.8

Note: Results include SC-Alt assessment results.

Exemplary	<b>"Exemplary"</b> : student demonstrated exemplary performance in meeting the grade level standard.
Met	<b>"Met"</b> : student met the grade level standard.
Not Met	<b>"Not Met"</b> : student did not meet the grade level standard.

**End of Course Tests**

Percent of tests with scores of 70 or above on:	Our School	Middle Schools with Students Like Ours
Algebra 1/Math for the Technologies 2	94.2	96.4
English 1	100	94.1
Biology 1	N/A	73.2
US History and the Constitution	N/A	43.8
All Subjects	95.1	94.6

Middle Schools with Students Like Ours are middle schools with poverty indices of no more than 5% above or below the index for the school.

Abbreviations for Missing Data

N/A-Not Applicable    N/AV-Not Available    N/C-Not Collected    N/R-Not Reported    I/S-Insufficient Sample

**OPPORTUNITIES**

	Our School	Change from Last Year	Middle Schools with students like ours
<b>Students (n = 515)</b>			
Percent of students participating in Medicaid, SNAP, or TANF; homeless, foster, or migrant students (poverty index)	72.9	Down from 78.8%	N/A
Percent of students (grade 7 & 8) enrolled in HS credit courses	30.7	Up from 29.1%	23.2
Attendance Rate	96.2	Down from 97.1%	95.1
With disabilities	15.1	Up from 15.0%	13.7
Out of school suspensions or expulsions for violent and/or criminal offenses	2.5	Up from 1.3%	0.8
Percentage of students served by gifted and talented programs	30.6	Up from 29.7%	20.6
Percentage of students retained	0.6	Up from 0.0%	0.5
Annual dropout rate	0.0	No change	0.0
<b>Teachers (n = 34)</b>			
Percentage of teachers with advanced degrees	47.1	Down from 52.4%	58.8
Percentage of teachers on continuing contract	82.4	Up from 69.0%	80.0
Teachers returning from previous year	86.5	Up from 86.2%	87.0
Teacher attendance rate	94.5	Up from 93.6%	94.7
Average teacher salary*	\$49,852	Up 1.9%	\$47,381
Professional development days / teacher	16.9 days	Down from 22.1 days	11.2 days
Percentage of teacher vacancies for more than 9 weeks	8.8	N/A	0.6
<b>School</b>			
Principal's years at school	1.0	Down from 4.0	6.0
Student-teacher ratio in core subjects	21.4 to 1	Up from 21.1 to 1	22.0 to 1
Prime instructional time	88.9	Up from 88.6%	88.6
Opportunities in the arts	Good	No change	Good
Opportunities in foreign languages	Poor	N/A	Poor
AdvancEd (SACS) accreditation	Yes	No change	Yes
Parents attending conferences	98.5	Down from 100.0%	99.7
Character development program	Excellent	No change	Good
Avg. age of books / electronic media in the school library	15.0	N/A	15.1
Number of resources available per student in the school library media center	17.3	N/A	23.5
Bandwidth capacity per student	50-100 Mbps	N/C	N/A
Percent of classrooms with wireless access	51-75%	N/C	N/A
District-issued learning devices per student	1.3	N/C	0.9
District-issued technology devices per teacher	1.9	N/C	1.9
Percentage of classes not taught by highly qualified teachers	0.0	Down from 3.4%	2.9
Dollars spent per pupil**	\$10,550	Up 12.2%	\$7,810
Percent of expenditures for instruction**	55.9	Up from 55.8%	61.7
Percent of expenditures for teachers' salaries**	57.1	Up from 56.3%	62.7

\* Includes current year teachers contracted for 190 days or more.

\*\* Prior year audited financial data are reported.

Abbreviations for Missing Data

N/A-Not Applicable

N/AV-Not Available

N/C-Not Collected

N/R-Not Reported

I/S-Insufficient Sample

**OPPORTUNITIES**

**Evaluations by Teachers, Students, and Parents**

**Evaluations by Teachers, Students, and Parents**

	<b>Teachers</b>	<b>Students*</b>	<b>Parents*</b>
Number of surveys returned	43	172	108
Percent satisfied with learning environment	72.1	60.5	70.4
Percent satisfied with social and physical environment	81.9	62.2	71.7
Percent satisfied with school-home relations	61.3	82.3	53.2

\* Only students at the highest middle school grade and their parents were included.

**State Ratings History of School**

<b>Year</b>	<b>Absolute Rating</b>	<b>Growth Rating</b>
2014	Average	Average
2013	Average	Below Average
2012	Average	Average

Based on state law, schools will not be rated for state accountability purposes until Fall 2017.

**Additional Resources**

- SC State Content Standards
- [Family-Friendly Guides to the SC Content Standards](#)
- [2014-15 Accountability Manual](#)
- [Report Card Data Files](#)
- [ESEA Data Files](#)

Abbreviations for Missing Data

N/A-Not Applicable    N/AV-Not Available    N/C-Not Collected    N/R-Not Reported    I/S-Insufficient Sample